

METAL FRAMING



STUDS

**FURRING
CHANNEL**

**COLD ROLLED
CHANNEL**

CORNER BEAD

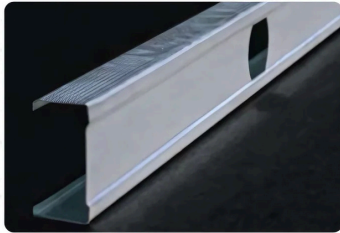
TRACK

**Other Framings
(Structural Profiles / Industrial
Profiles / Roofing Sheets &
Enclosures)**



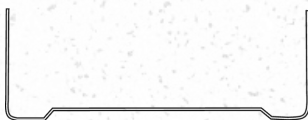
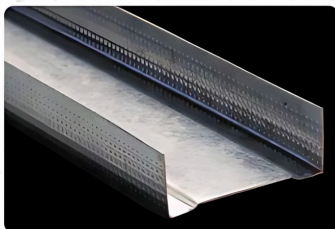
METAL FRAMING

STUDS



CODE	PRODUCT NAME	UNIT
MA014-14-001	METAL STUD G25 1-5/8" X 8'	Piece
MA014-14-002	METAL STUD G25 1-5/8" X 10'	Piece
MA014-14-003	METAL STUD G25 1-5/8" X 12'	Piece
MA014-14-004	METAL STUD G25 2-1/2" X 8'	Piece
MA014-14-005	METAL STUD G25 2-1/2" X 10'	Piece
MA014-14-006	METAL STUD G25 2-1/2" X 12'	Piece
MA014-14-007	METAL STUD G25 3-5/8" X 8'	Piece
MA014-14-008	METAL STUD G25 3-5/8" X 10'	Piece
MA014-14-009	METAL STUD G25 3-5/8" X 12'	Piece
MA014-14-010	METAL STUD G20 1-5/8" X 10'	Piece
MA014-14-011	METAL STUD G20 1-5/8" X 12'	Piece
MA014-14-012	METAL STUD G20 2-1/2" X 10'	Piece
MA014-14-013	METAL STUD G20 2-1/2" X 12'	Piece
MA014-14-014	METAL STUD G20 3-5/8" X 10'	Piece
MA014-14-015	METAL STUD G20 3-5/8" X 12'	Piece
MA014-14-016	METAL STUD G20 6" X 12'	Piece

TRACKS



CODE	PRODUCT NAME	UNIT
MA014-14-017	METAL TRACK G25 1-5/8" X 10'	Piece
MA014-14-018	METAL TRACK G25 2-1/2" X 10'	Piece
MA014-14-019	METAL TRACK G25 3-5/8" X 10'	Piece
MA014-14-020	METAL TRACK G20 1-5/8" X 10'	Piece
MA014-14-021	METAL TRACK G20 2-1/2" X 10'	Piece
MA014-14-022	METAL TRACK G20 3-5/8" X 10'	Piece
MA014-14-023	METAL TRACK G20 6" X 12'	Piece

COLD ROLLED CHANNEL



CODE	PRODUCT NAME	UNIT
MA014-14-024	Cold Rolled Channel G20 - 1/4" x 1-1/2" 1-1/2" / 10'	Piece
MA014-14-025	Cold Rolled Channel G16 - 1/4" x 1-1/2" 1-1/2" / 10'	Piece

METAL FRAMING

FURRING CHANNEL



CODE	PRODUCT NAME	UNIT
MA014-14-026	Furring Channel G25 - 2-1/4" x 1" x 1" / 10'	Piece
MA014-14-027	Furring Channel G20 - 2-1/4" x 1" x 1" / 10'	Piece

CORNERBEAD



CODE	PRODUCT NAME	UNIT
MA014-14-028	Esquinero G25 - 1-1/4" x 1-1/4" x 10'	Piece

OTHER FRAMINGS ONLY ON REQUEST

1) Structural profiles.

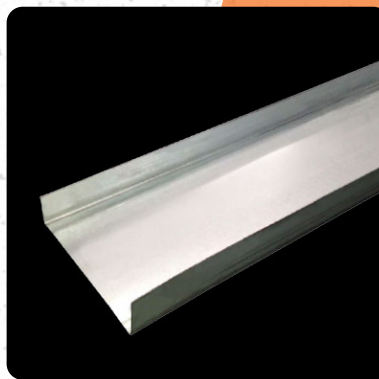
MOQ - Full or Mix Container

In galvanized steel and black iron, made in compliance with ASTM C955 and ASTM A653 standards.



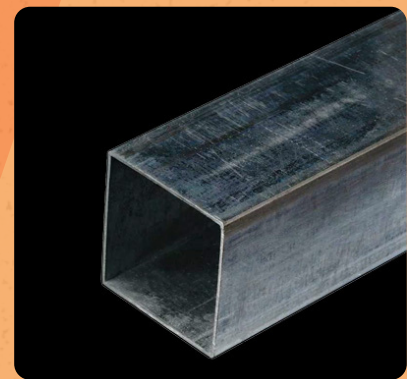
Structural Profile C

Designed for the assembly of trusses, mezzanines, columns, beams and also ideal for the assembly of Lightweight enclosures with special structural requirements.



Structural Track

Specially designed for the assembly of lightweight enclosures with special structural requirements.



Square and Rectangular Tube

Structural profiles for construction.

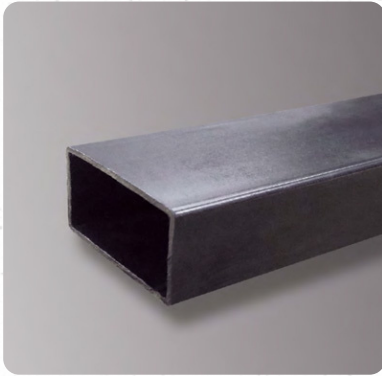
METAL FRAMING

OTHER FRAMINGS ONLY ON REQUEST

MOQ - Full or Mix
Container

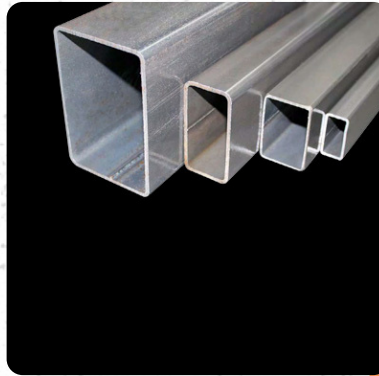
2) Industrial Profiles.

In galvanized steel and black iron, made in compliance with ASTM C955 and ASTM A653 standards.



Industrial Pipe

Profiles used in the metalworking industry and construction



Rectangular Tube

Structural profiles for construction.



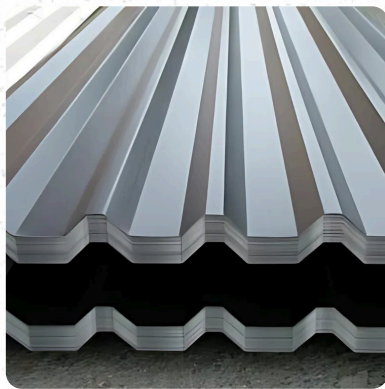
Round Tube

Structural profiles for construction.

3) Roofing Sheets and Enclosures

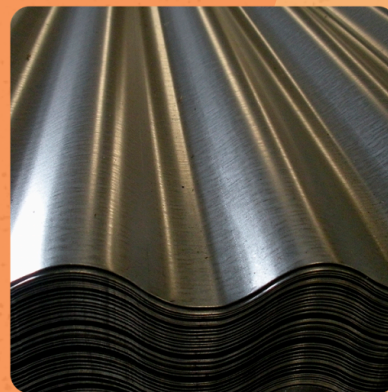
MOQ - Full or Mix
Container

Made with high resistance steel in accordance with international standards and with galvanized coating to prevent corrosion.



Rectangular Sheet

For roofs of homes, commerce, industry, temporary enclosures, among other architectural applications.



Corrugated Sheet

For roofs of homes, commerce, industry, temporary enclosures, among other architectural applications.