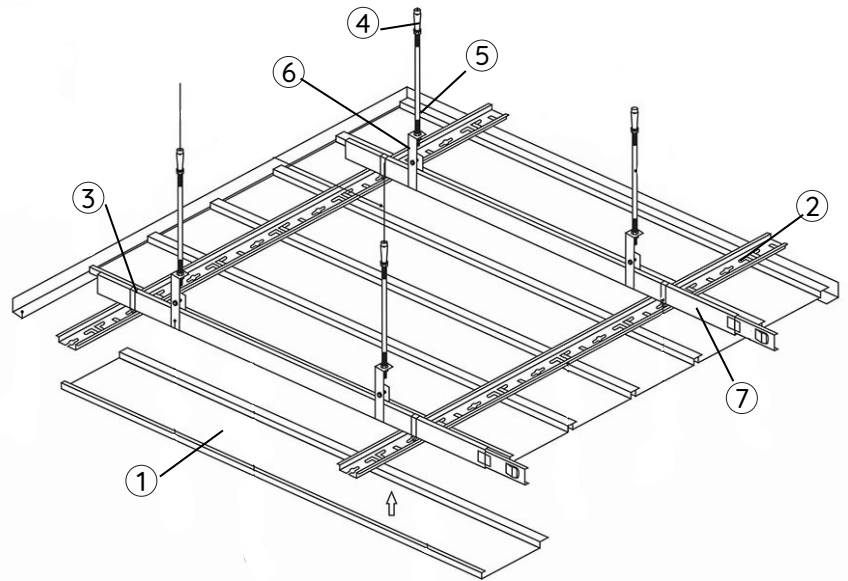


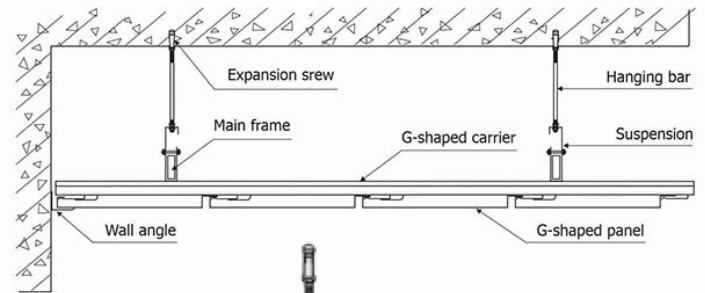
Suspension System G-Shape

BENEFITS:

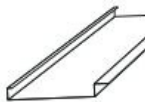
- Hot dipped galvanized coating inhibits red rusting better than electrogalvanized.
- System is engineered and designed to fit and provide high quality finish.
- Main Tee easy profile for installation with Cross Tee.
- Increased strength and stability for improved performance.
- Easy to cut.
- Rotary stitched for additional torsional strength and extra stability during installation.
- Faster and easier insertion/installation of cross tees.
- Tighter tee to tee connection.
- Better load carrying capability.



Code	Type	Dimension
BAC 50	38# GA.20 Rolled Channel	1 1/2" x 144"
	GS Panel Carrier	1 1/2" x 120"
Wall Molding	L shape	7/8" x 7/8" x 142"



1 C-shape stripe panel



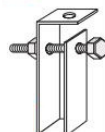
5 Suspension bolt (opt)



2 Panel carrier



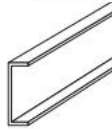
6 38# Main carrier suspension bracket



3 Hanger



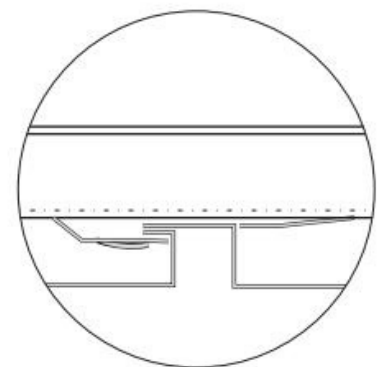
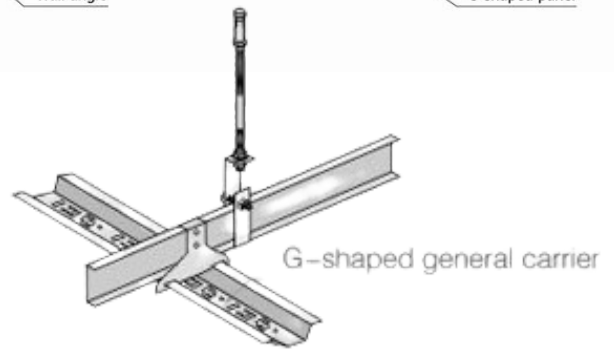
7 38# Main carrier (opt)



4 Expansion screw (opt)



8 L-shape angle (opt)



COLOR CHART

